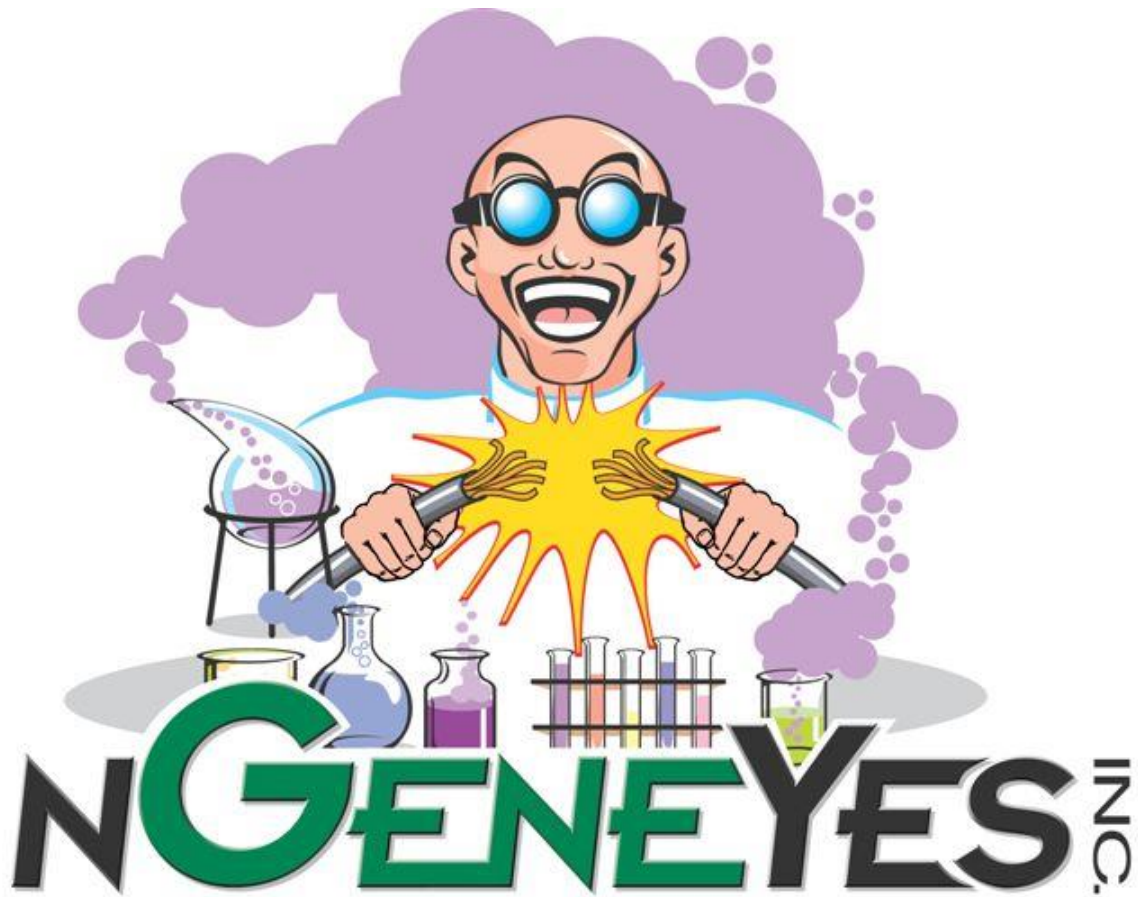


SmartScreens Installation Guide

**CONFIDENTIAL AND PROPRIETARY**



---

Prepared By:



**nGeneYes, Inc.**

(407) 979-4519  
6526 Old Brick Road  
Suite 120 – 157  
Windermere, FL 34786

## Contents

Confidentiality .....	4
Liability .....	4
Terms & Conditions .....	4
Force Majeure .....	4
Law.....	4
Arbitration .....	4
Installation: SmartScreen Utilities .....	5
THIS IS AN IMPORTANT STEP.....	5
If you are using Windows 7 OR Windows 10.....	5
Step 1.....	6
Step 2.....	6
Step 3.....	6
Step 4.....	7
Step 5.....	7
Step 6 ( Windows XP ) .....	8
Step 7 ( Windows XP ) .....	8
Step 6 ( All other Windows Versions ) .....	9
Step 7 ( All other Windows Versions ) .....	9
Step 8.....	9
Step 9.....	10
Step 10.....	10
Step 11.....	10
Step 12.....	11
Step 13.....	11
Step 14.....	12
Step 15.....	12
Step 16.....	12
Step 17.....	13
Step 18.....	13
Step 19.....	13
Installation: SmartScreens for Mach3 .....	14
Step 1b.....	14
Step 2b.....	14

Step 3b..... 14

Step 4b..... 15

Step 5b     THIS IS AN IMPORTANT STEP ..... 16

Step 6b..... 16

## Confidentiality

This **Document** is submitted on a confidential basis in order to provide a general understanding of how to install the SmartScreens for Mach3.

**The use of this Document for any other purpose is strictly prohibited. This Document may not be reproduced or redistributed, in whole or in part, nor may its contents be disclosed to any other person or entity.**

The receipt of this **Document** constitutes the **Agreement** on the part of the recipient hereof to maintain the confidentiality of the information contained herein. If the reader of this **Document** is not the intended recipient you are hereby notified that any reading, dissemination, distribution, copying, or other use of this communication or any of its attachments is strictly prohibited. If you have obtained this **Document** in error, destroy this **Document**, and all copies, paper or electronic, or otherwise then please notify **nGeneYes, Inc.** immediately.

**Legal Department**  
**nGeneYes, Inc.**  
(407) 979-4519  
13506 Summerport Village Pkwy  
Suite 337  
Windermere, FL 34786  
[legal@nGeneYes.com](mailto:legal@nGeneYes.com)

## Liability

In no event will **nGeneYes, Inc.** be liable for any lost profits, lost savings, incidental damages or other consequential damage, even if **nGeneYes, Inc.** had been advised of the possibility of such damages, nor will **nGeneYes, Inc.** be liable for loss of funds contained in, dispersed by or associated with, any item under this **Agreement**. **nGeneYes, Inc.** will not be liable for any claim by the customer based on any third-party claim.

## Terms & Conditions

### Force Majeure

Neither party shall be responsible for any failure or delay in complying with the terms of this Agreement, including but not limited to, delays in delivery, where such failure or delay results from Acts of God or any other events beyond the reasonable control of such party (Force Majeure.)

### Law

This **Agreement** shall be governed in accordance with the law of the State of Florida.

### Arbitration

Parties agree to submit any disputes to binding arbitration.

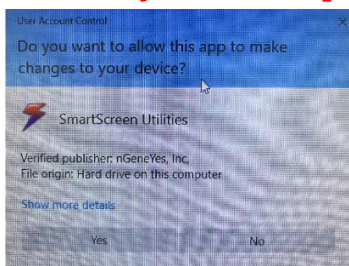
## Installation: SmartScreen Utilities

Please note **SmartScreen Utilities** requires **Microsoft .NET Framework**. If it is not installed on your computer the SmartScreen Installation will notify you. So, if you do need to install it, please go to our support page and select the appropriate version for your computer operating system. <http://ngeneyes.com/smartscreen/support/>

### THIS IS AN IMPORTANT STEP

#### If you are using Windows 7 OR Windows 10

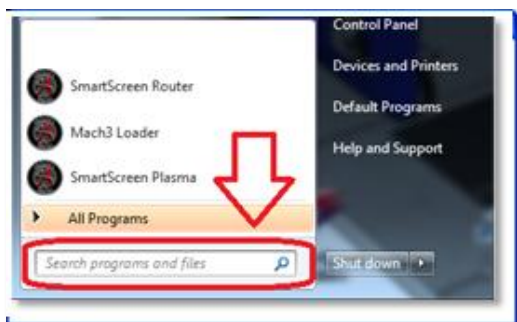
Do this before you begin installation or you will repeatedly get a message like this.



#### Windows 7:

You must adjust the **User Account Control** setting,

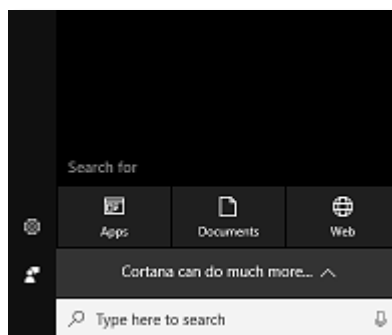
First: Find the search which is located at the bottom of the Start Menu.



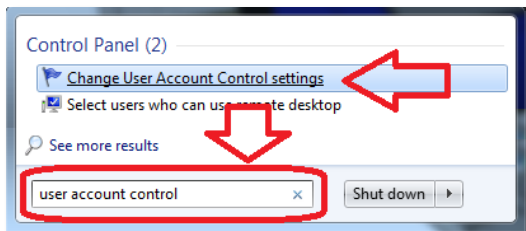
#### Windows 10:

You must adjust the **User Account Control** setting,

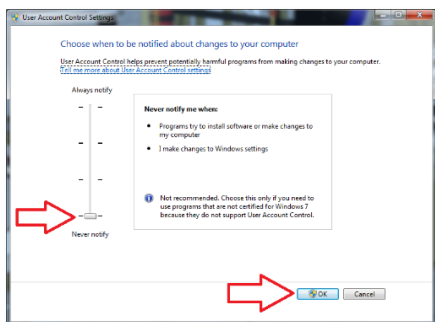
First: Find the search which is located at the bottom of the Start Menu.



Second: Type in user account control

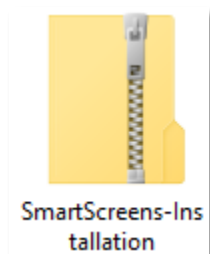


Third: Type in user account control



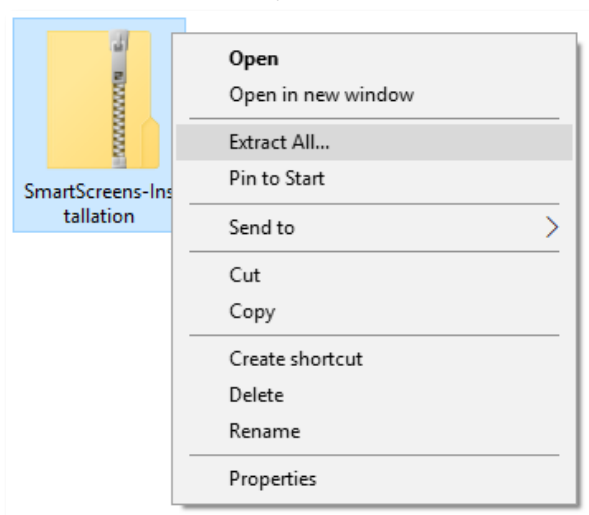
## Step 1

Once you download the software, you will be downloading a Zip file as shown below.



## Step 2

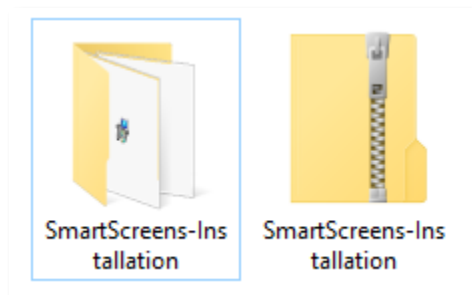
Using the left mouse button, single click on the icon so that it is selected (the background turns blue)  
Then using the right mouse button, click to display the menu.  
Then choose Extract All,



Make sure you extract the files, or the installation will not work properly.

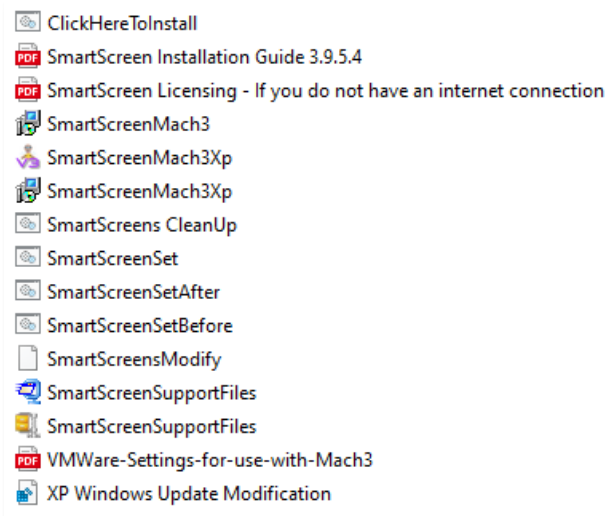
## Step 3

The uncompressed folder will be created and it should open automatically



## Step 4

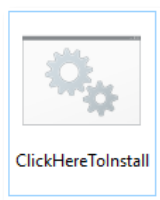
The folder will contain several files as shown below



## Step 5

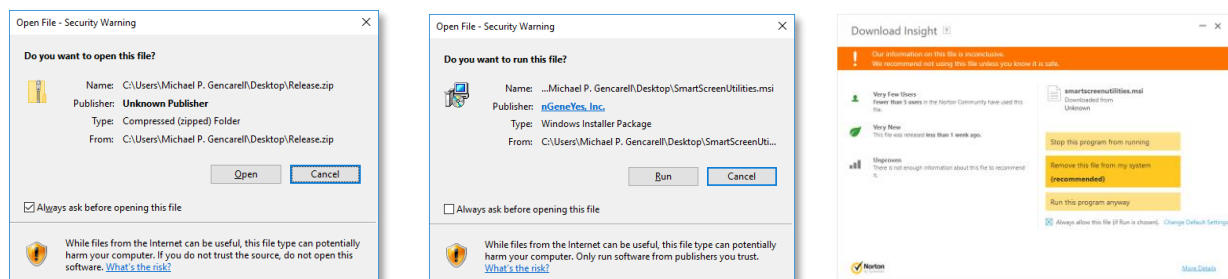
After you extract the files...

The first file you will click on **ClickHereToInstall** will install the SmartScreen Utilities.



Note: Depending on which Virus protection or other security program you are using you may be asked to allow this program to run... Always say yes to continue the installation process.

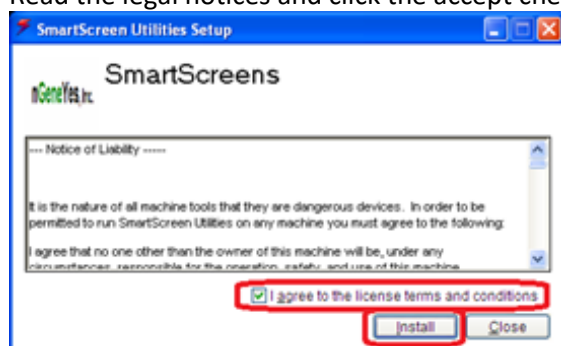
Some Examples of the screens you may see.  
Most Versions of Windows Installation Screens



## Step 6 ( Windows XP )

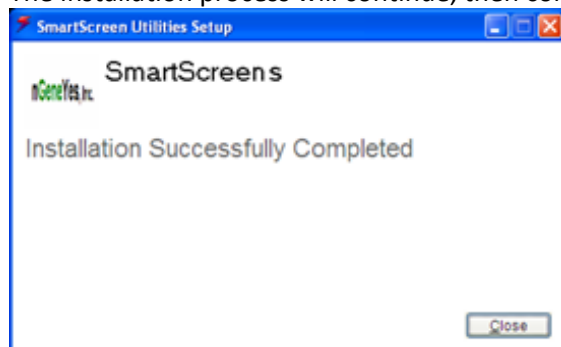
If you have allowed the program to open / run, you will see the screen shown below.

Read the legal notices and click the accept checkbox if you agree, and then click the Install button.

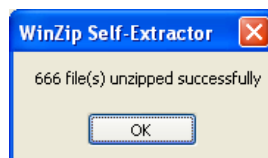
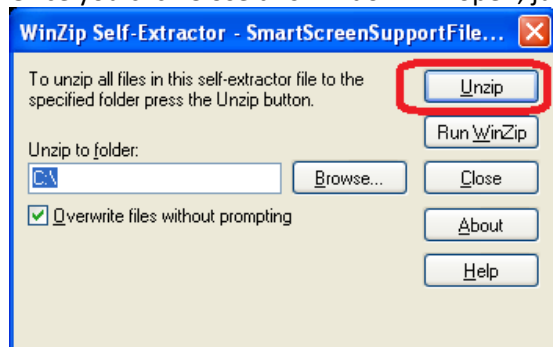


## Step 7 ( Windows XP )

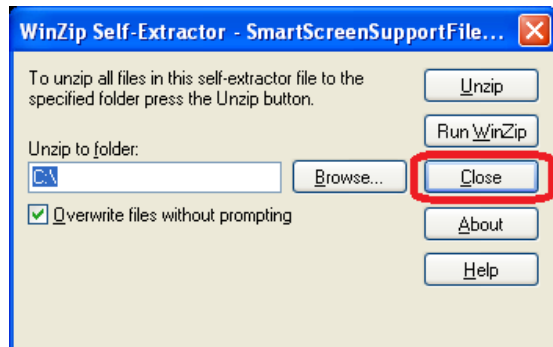
The installation process will continue, then complete as shown below.



Once you click Close this window will open, just click the **Only the Unzip button**.



Then click the Close button





## Step 6 ( All other Windows Versions )

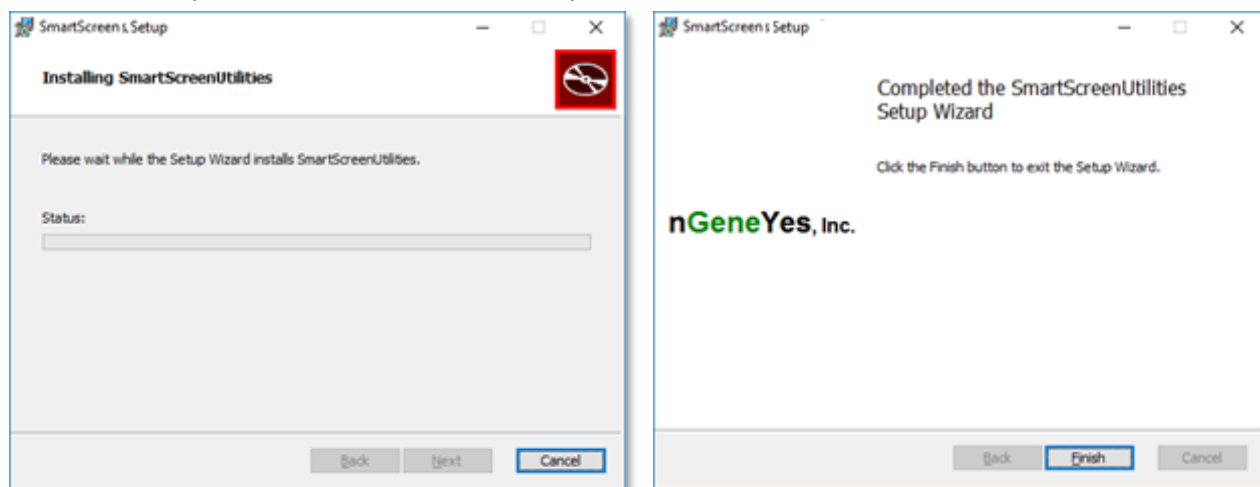
If you have allowed the program to open / run, you will see the screen shown below.

Read the legal notices and click the accept checkbox if you agree, and then click the Install button.



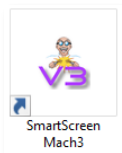
## Step 7 ( All other Windows Versions )

The installation process will continue, then complete as shown below.



## Step 8

Upon successful completion 1 shortcut should appear on your desktop as shown below.



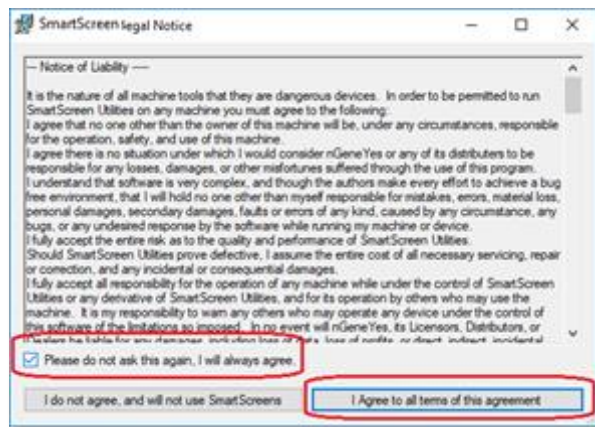
Now, click on the SmartScreen Utilities shortcut.

This is the icon you will use to start the SmartScreen Utilities application.

## Step 9

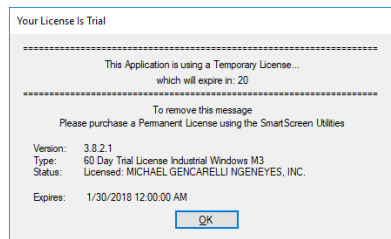
Read the legal notices and click the accept button if you agree, and then click the install button.

If you click the check box this message will only be displayed once, unless a software upgrade is installed.



## Step 10

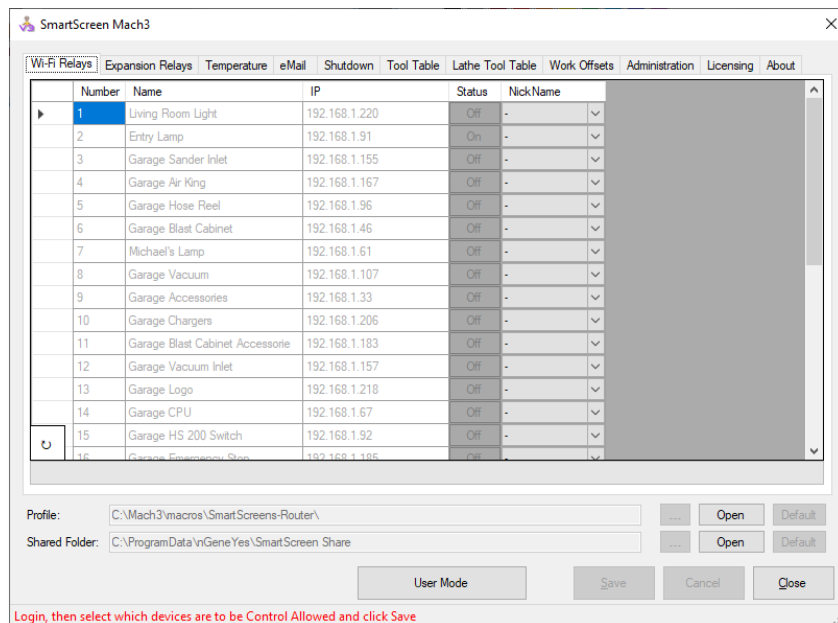
If you have a Temporary License or No License then a dialog similar to this will be displayed, otherwise you will not see this dialog.



## Step 11

Success, if you see a screen like this you are almost there.

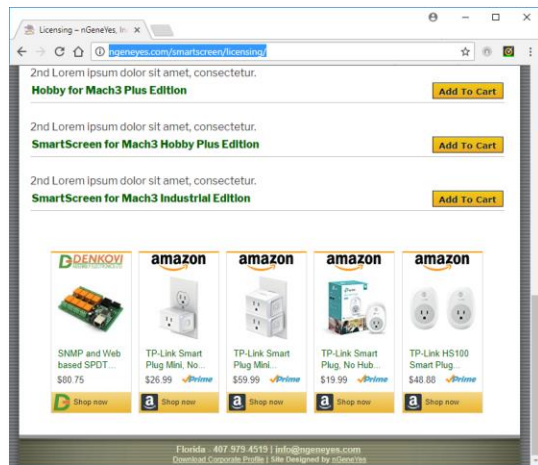
Unless you already have TP Link Smart Wi-Fi devices installed in you location then this page may be blank.



If you do not have any TP Link Smart Wi-Fi devices or Ethernet SNMP based 8 SPDT relay module (Expansion Relays), visit our website to be sure you get the correct compatible devices.

We DO NOT SELL HARDWARE. These links are provided to be sure you get the correct items. These are the only devices we support, and they have been tested extensively with our software.

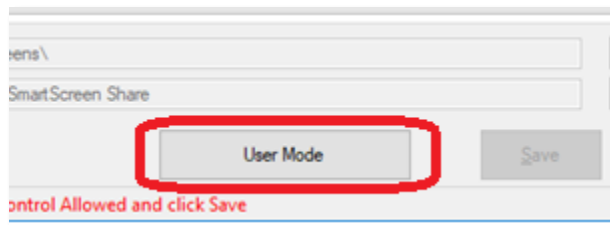
<http://ngeneyes.com/smartscreen/licensing/>



## Step 12

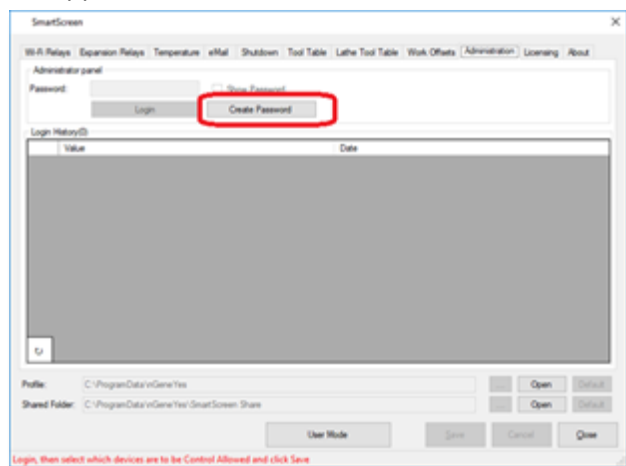
Click the button, User Mode.

This button will toggle between administrator mode and user mode.



## Step 13

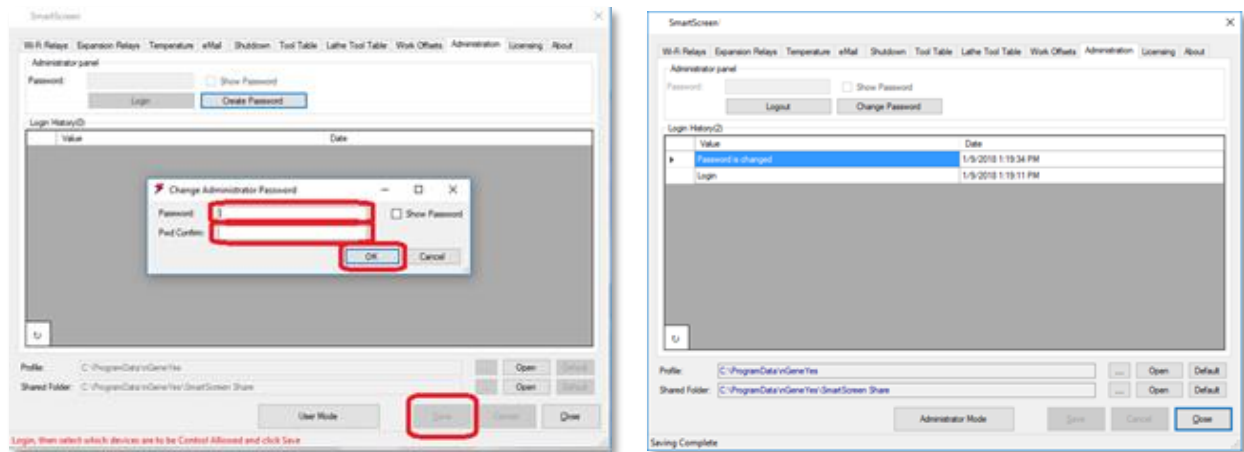
The application will switch to the Administration Tab, then click on the Create Password button.



## Step 14

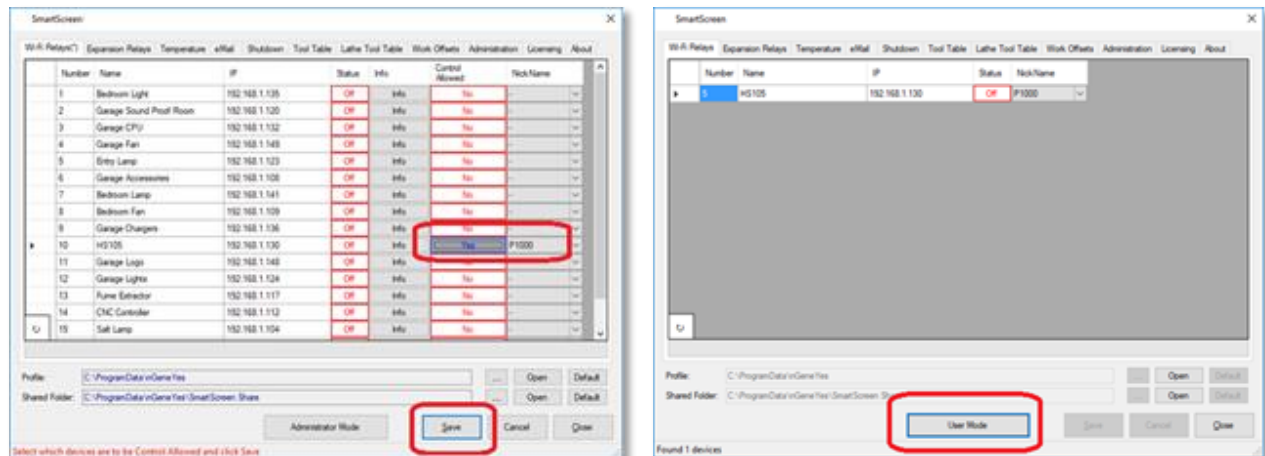
Type in the password of your choice,  
Twice to confirm the passwords match,  
Then click the Ok button.

Then click the save button at the bottom of the screen. A successful password creation screen shown below.



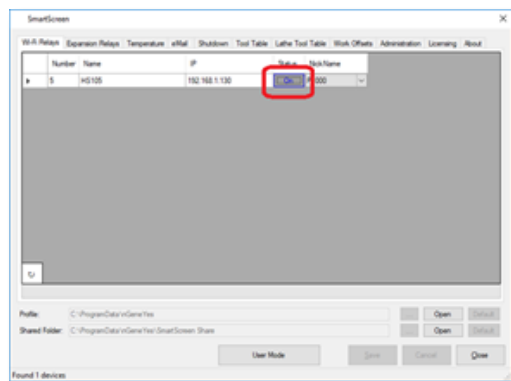
## Step 15

To use the Smart Wi-Fi functionality, you must configure at least 1 device as control allowed as shown below. Click the Control Allowed, to change it from the default No, to Yes. Click Save. Then click on the Administrator Mode button to change to User Mode. Now only devices which are control allowed will be displayed.



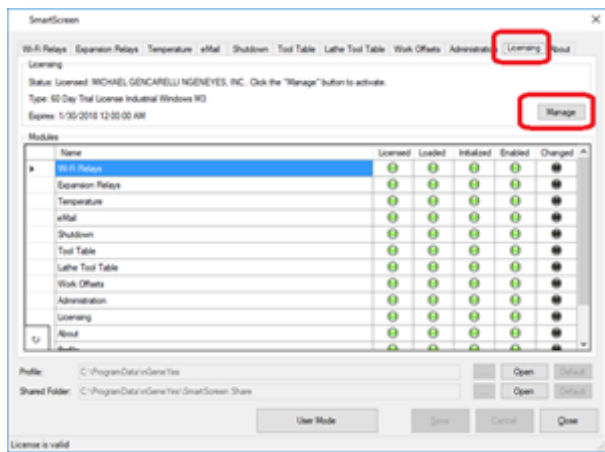
## Step 16

At this point if you can control the Smart Wi-Fi devices. Click on the Status column (on / off) to verify that you can control the device(s).



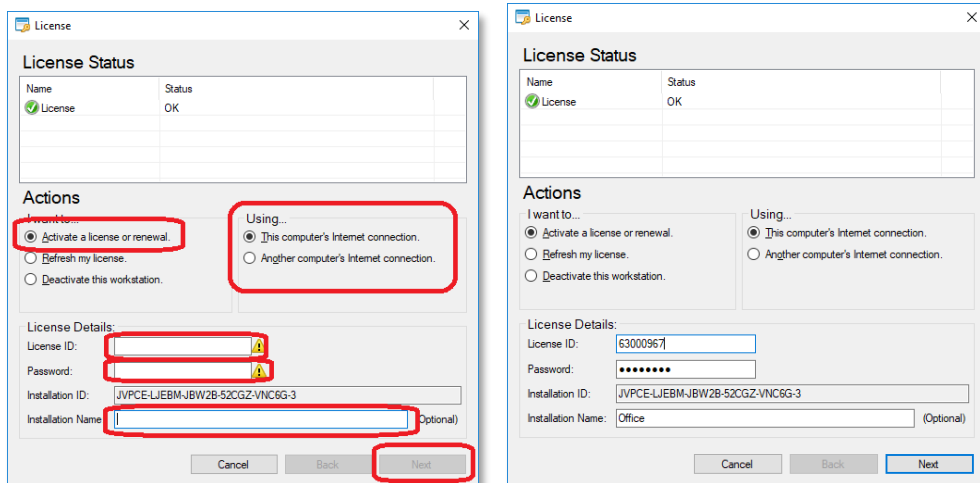
## Step 17

Now you are ready for licensing. To install or update your license, click on the Licensing Tab. Then Click on the Manage button.



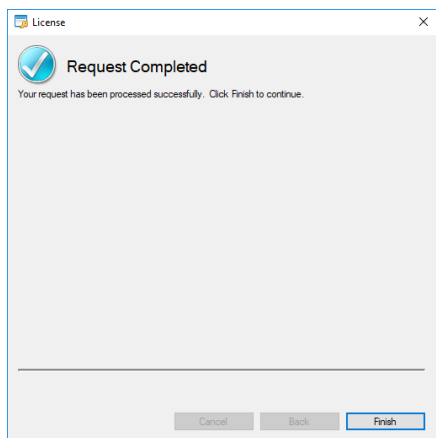
## Step 18

Select Activate a license or renewal, enter the License ID, and Password. Also enter an Installation Name like CNC Router, or CNC Mill, Etc. Then Click Next.



## Step 19

This portion is Complete!!!

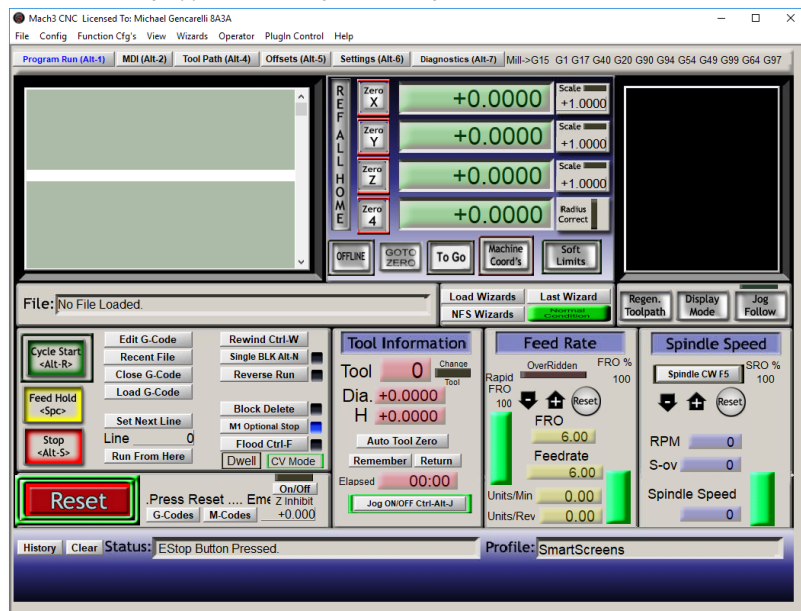


## Installation: SmartScreens for Mach3

### Step 1b

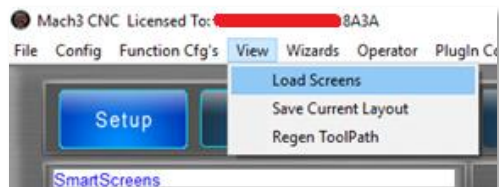
Open Mach3 as you would normally with your regular profile.

Your screen may appear differently based on your current screen set.



### Step 2b

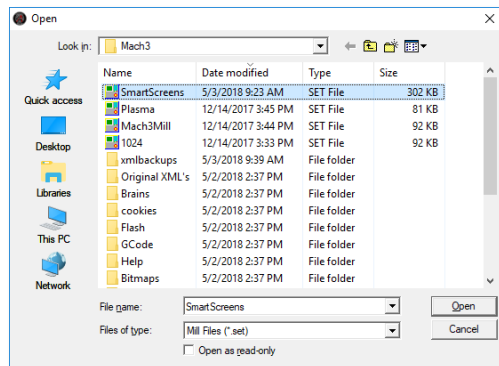
To load the SmartScreen screen set, click on the View Menu, then Load Screens.



### Step 3b

Then select the SmartScreens screen set and click Open.

The first time you do this SmartScreens may take a moment to op while it sets up everything for the first time.

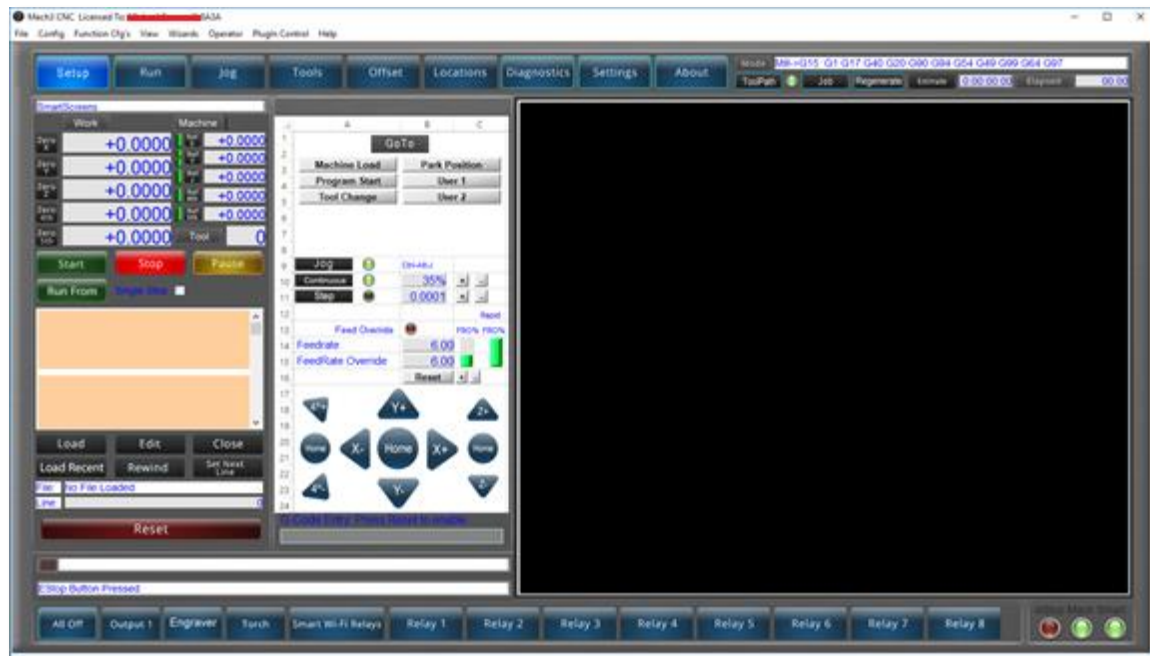


## Step 4b

You should then see the SmartScreens for Mach3 system.

If not please contact our Technical Support at 407 979-4519 or [Support@nGeneYes.com](mailto:Support@nGeneYes.com)

To see the entire screen, you must have your display resolution set to at least 1600 x 900 or higher resolution





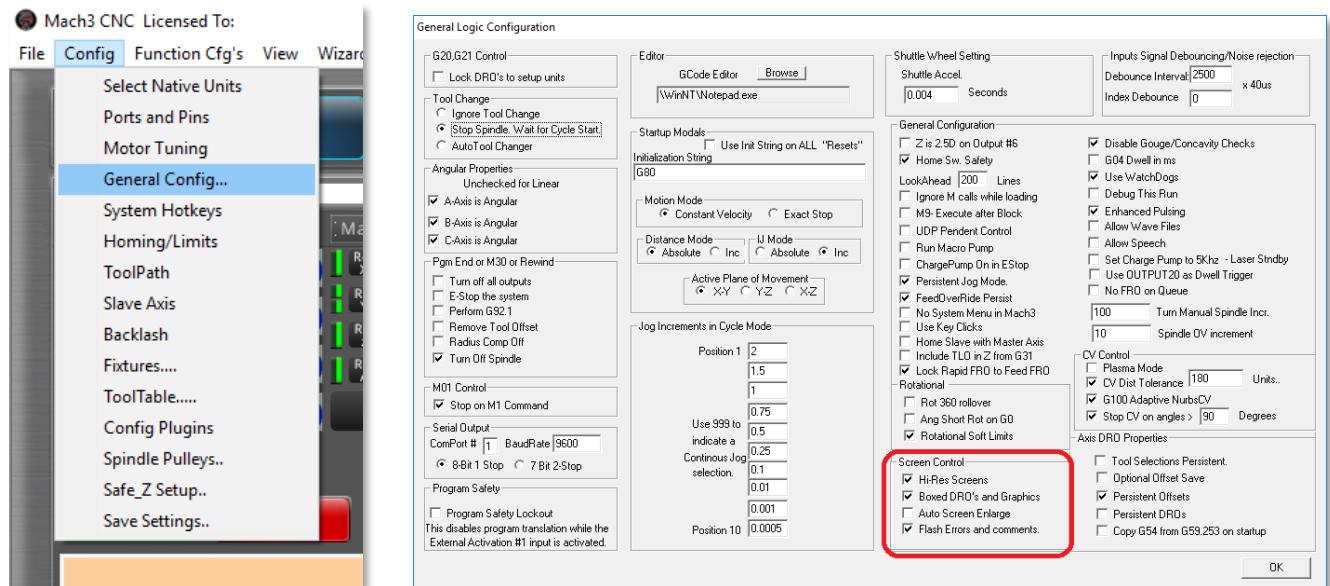
## Step 5b

## THIS IS AN IMPORTANT STEP

Now...

To be sure that the screens display properly go to the menu **Config -> General Config...**

And be sure your setting is as shown below.



## Step 6b

You should be ready to go...

For more information on how to use SmartScreens for Mach3 visit our YouTube Channel

<https://www.youtube.com/user/MyGarageShopChannel/playlists>

You can get there anytime if your computer is connected to the internet just go to the About page, and click the Helpful Videos Button.

